

E-WASTE



ISO Certified : 14001:2015, 45001:2018, 9001:2015

JSM RECYCLING LTD

Build Green World

Kolma south, Dairy Farm-
1341, savar, Dhaka

+8801799111995, +8801911201539

jsmrecyclingltd@gmail.com.

www.jsmrecyclingltd.com



ISO Certified : 14001:2015, 45001:2018, 9001:2015

JSM RECYCLING LTD
Build Green World

www.jsmrecyclingltd.com

TABLE OF contents

1

About Company

2

Vision & Mission

3

Licenses and Permissions

4

Our Services

5

Meet the Team

6

Fire, Safety and Security

7

Worker's Compensation Insurance & Facilities

8

Equipment and Machines

9

Warehouse Facility and Worker Capabilities

10

Process Flow and Working Process

11

Our Local and Global Client



ABOUT COMPANY

We are JSM Recycling Limited, has been working for more than 7 years with e-waste, others disposal management with an environment friendly manner, adopting all sensitive and security measures properly to ensure the animal and environment safety & security. Our motto is not only earning bread and butter but also save and secured the planet and seedlings the seeds of good innovative deeds for future generation.

I, therefore, requested you to provide us the participation with your good deeds along with these disposal management systems and indulge us to share your knowledge and skill for the betterment of our planet.



ISO Certified : 14001:2015, 45001:2018, 9001:2015

JSM RECYCLING LTD

Build Green World

www.jsmrecyclingltd.com



WELCOME MESSAGE

Md. Shajahan Miah
Managing Director

Welcome to JSM Recycling Limited!

At JSM Recycling Limited, we are committed to creating a sustainable future by transforming waste into valuable resources. As the Managing Director, I am proud to lead a company dedicated to responsible recycling practices, innovative solutions, and environmental stewardship. Our team works tirelessly to ensure that every step in our process upholds the highest standards of quality, safety, and environmental care.

We believe that effective waste management is not just a business but a responsibility toward our community and the planet. Thank you for joining us on this journey toward a cleaner, greener tomorrow.

Warm regards,

Md. Shajahan Miah



VISION & MISSION

Vision

"To be a leading innovator in sustainable recycling solutions, committed to transforming waste into valuable resources, promoting environmental stewardship, and contributing to a cleaner, greener future for generations to come."

Mission

At JSM Recycling Limited, our mission is to promote sustainable environmental practices by providing efficient, reliable, and innovative recycling solutions. We are committed to reducing waste, conserving natural resources, and fostering a cleaner, healthier planet for future generations. Through responsible recycling and community engagement, we strive to create value for our customers, employees, and the communities we serve.



LICENSES AND PERMISSIONS



ISO Certified : 14001:2015, 45001:2018, 9001:2015

JSM RECYCLING LTD
Build Green World

www.jsmrecyclingltd.com



ISO CERTIFIED



ISO Certified : 14001:2015, 45001:2018, 9001:2015

JSM RECYCLING LTD
Build Green World

www.jsmrecyclingltd.com

OUR SERVICES



JSM Recycling Limited offers a comprehensive range of recycling and waste management services aimed at promoting environmental sustainability and efficient resource recovery. Their services typically include:

E-Waste Recycling Management

- Collection of E-waste from residential, commercial, and industrial clients.
- Processing and proper management of various materials including Electric and Electronics , plastics, metals, glass, and electronics.
- Safe and compliant disposal of non-recyclable waste.
- On-site sorting and baling of recyclable materials.
- Data destruction and secure disposal of IT equipment.
- Safe handling and disposal of hazardous waste in accordance with regulatory standards.
- Specialized services for chemical and industrial waste.
- Provision of various sizes of bins and skips for on-site waste collection.
- Flexible hire periods tailored to project needs.

MEET THE TEAM



Md. Kamal Hossain
CTO-(chief Technical Officer)



Seikh Md Tahmid Farzan
Manager Web and ERP software development



Shakhawat Hossain
SCM Manager



Md. Muked Khan
Warehouse Manager



Arifa Akter
Environment, Health and Safety Manager



ISO Certified : 14001:2015, 45001:2018, 9001:2015

JSM RECYCLING LTD
Build Green World

www.jsmrecyclingltd.com



Fire, Safety and Security



JSM Recycling Limited is committed to providing a safe, secure, and healthy working environment for all employees, contractors, visitors, and members of the public who may be affected by our operations. We recognize that effective fire, safety, and security management are integral to our business success and are essential for protecting our people, assets, and the environment.

Our Commitment:

Prioritizing Safety : Safety is our top priority. We will strive to eliminate or minimize risks associated with our activities through proactive hazard identification, risk assessment, and implementation of appropriate control measures.

Compliance : We are committed to complying with all applicable fire, safety, and security laws, regulations, and industry best practices.

Continuous Improvement : We will continuously improve our fire, safety, and security performance through regular monitoring, audits, incident investigations, and management review.

Employee Involvement : We encourage active participation from all employees in identifying hazards, suggesting improvements, and promoting a strong safety culture.

Training and Competency : We will provide comprehensive training to all employees to ensure they have the knowledge, skills, and competence to perform their duties safely and securely.

Environmental Responsibility : We are committed to minimizing the environmental impact of our operations and ensuring responsible waste management practices.



Fire, Safety and Security



JSM Recycling Limited is committed to providing a safe, secure, and healthy working environment for all employees, contractors, visitors, and members of the public who may be affected by our operations. We recognize that effective fire, safety, and security management are integral to our business success and are essential for protecting our people, assets, and the environment.

Fire Equipment :



Safety Equipment :





Worker's Compensation Insurance & Facilities

JSM Recycling Limited recognizes that our employees are our most valuable asset. We are committed to providing a safe, healthy, and supportive work environment. This commitment is reflected in our comprehensive worker insurance coverage and facilities.

***Commitment** : JSM Recycling Limited is committed to providing a safe and healthy work environment for all employees. As part of this commitment, the company maintains a comprehensive Worker's Compensation Insurance policy.

Coverage : This insurance provides coverage for medical expenses, lost wages, and rehabilitation costs for employees who sustain work-related injuries or illnesses.

Compliance : JSM Recycling adheres to all applicable state and federal regulations regarding Worker's Compensation, ensuring proper reporting of incidents and timely processing of claims.

Prevention : JSM Recycling Limited emphasizes proactive safety measures, including regular safety training, hazard assessments, and the provision of appropriate personal protective equipment (PPE), to minimize the risk of workplace accidents.

Worker Facilities :

- **Basic Amenities** : JSM Recycling Limited provides essential facilities to support employee well-being and comfort. These typically include: Clean and well-maintained restrooms and hygiene facilities.
- Designated break areas or lunchrooms with seating.
- Access to potable water.
- **Safety Equipment** : Provision of company-standard PPEs such as safety boots, eyewear, gloves and high visibility clothing.
- **Potential Enhancements** : Depending on the location and resources, JSM Recycling Limited may also offer additional facilities such as:
 - On-site parking.
 - Changing rooms and showers.
 - Employee assistance programs (EAPs).
 - Training Facilities.



Equipment and Machines



JSM Recycling Limited, as a responsible e-waste management company, would likely utilize a variety of equipment to ensure safe and efficient processing of electronic waste. Here's the different types of equipment we use:

Collection & Transportation:

- Collection Bins & Containers : Different sizes and types for various e-waste materials (e.g., secure bins for batteries, separate containers for CRTs).
- Transportation Vehicles : Trucks, vans, and specialized vehicles designed for safe and secure transport of e-waste. This could include vehicles with GPS tracking and security features.
- Lifting Equipment : Forklifts, pallet jacks to load and unload e-waste.

Sorting & Dismantling :

- Sorting Tables : To visually inspect and separate e-waste items by type (e.g., computers, printers, mobile phones).
- Hand Tools : Screwdrivers, pliers, wire cutters, and other tools for manual dismantling.
- Power Tools : Drills, saws, and other power tools for more efficient dismantling.
- Dust Extraction Systems : To capture hazardous dust particles released during dismantling.
- Dedicated Workstations:** Ergonomically designed workstations with proper lighting and ventilation.

Processing & Shredding :

- Shredders : Industrial-grade shredders to reduce the size of e-waste materials for easier processing. Different shredders may be used for different materials (e.g., plastic, metal).
- Granulators : Further reduce the size of shredded materials into smaller granules.
- Hammer Mills: For crushing and pulverizing certain components.



ISO Certified : 14001:2015, 45001:2018, 9001:2015

JSM RECYCLING LTD
Build Green World

www.jsmrecyclingltd.com



Equipment and Machines



Material Recovery & Refining:

- Magnetic Separators : To separate ferrous metals (iron and steel) from other materials.
- Eddy Current Separators : To separate non-ferrous metals (aluminum, copper, etc.) from other materials.
- Density Separators: To separate materials based on their density (e.g., plastics of different types).

Data Destruction:

- Data Wiping Software: To securely erase data from hard drives and other storage devices.
- Degaussers: Devices that use a strong magnetic field to erase data from magnetic storage media.
- Physical Destruction Devices: Hard drive shredders or crushers to physically destroy data storage devices.

Technology advancements: The e-waste recycling industry is constantly evolving. JSM Recycling would need to invest in newer technologies to improve efficiency and recover more materials.

Compliance: JSM Recycling must adhere to all relevant environmental regulations and industry standards.

Employee Training: Proper training is essential for employees to safely operate the equipment and handle hazardous materials.

Maintenance: Regular maintenance of equipment is crucial to ensure its proper functioning and prevent breakdowns.

Scalability : The equipment should be scalable to handle increasing volumes of e-waste.



Warehouse Facility and Worker Capabilities



Total warehouse area:

Total Warehouse Area : 10000sqft or 930sqm

Total structural steel shed: 8000sqft or 745sqm



Process Flow and Working Process

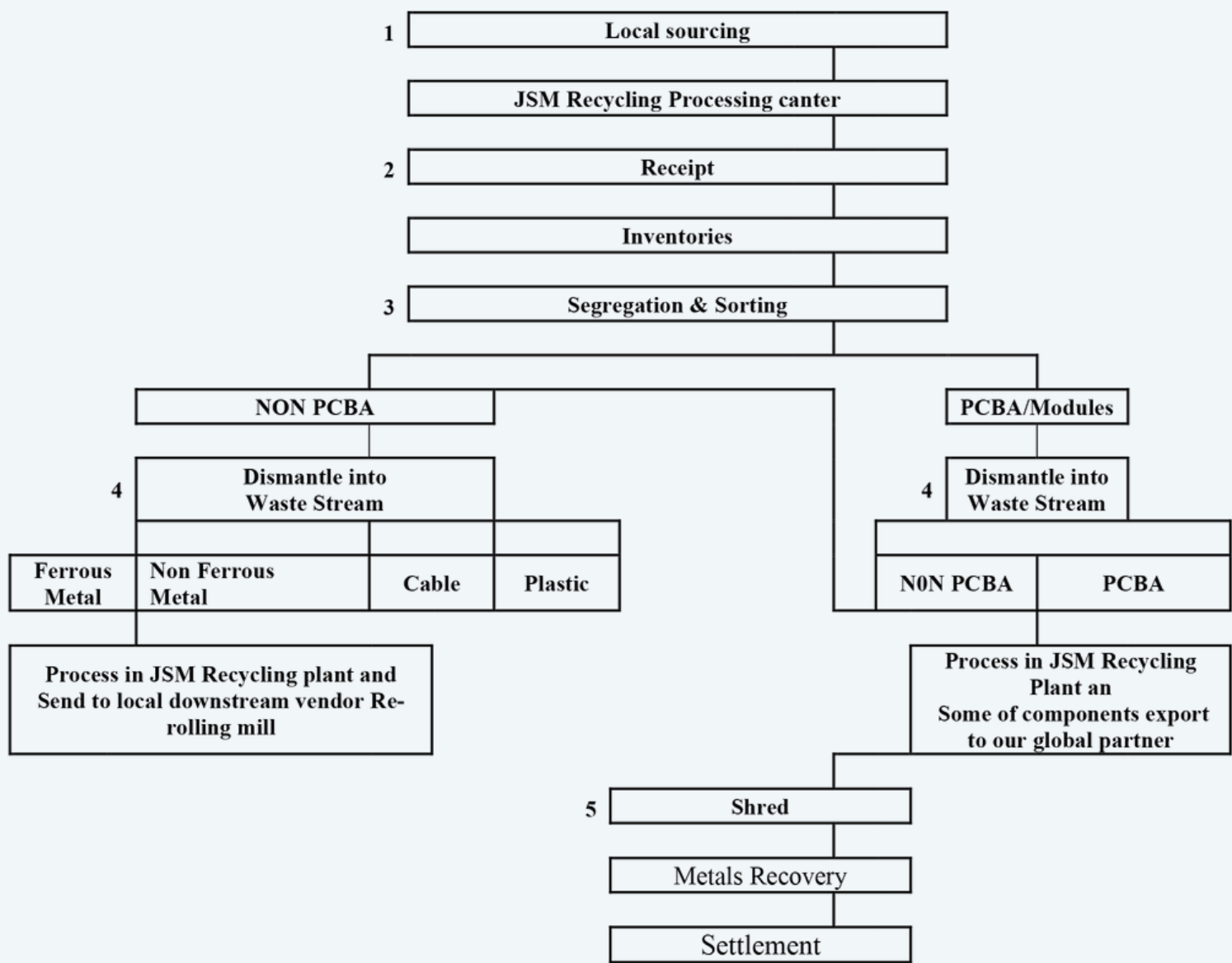
STEP-BY-STEP E-WASTE RECYCLING PROCESS

5 Recovery

4

3

E-WASTE PROCESS FLOW OF JSM Recycling Limited



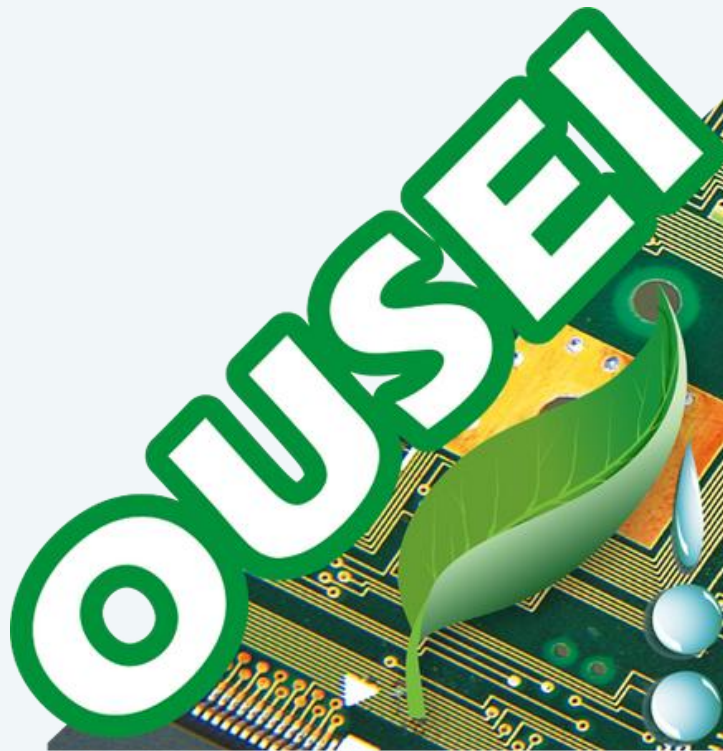
Process Flow and Working Process





Our Local and Global Client

Our Global Partner



Our Global Client :



**NETSTAR (SG)
PTE. LIMITED**



ISO Certified : 14001:2015, 45001:2018, 9001:2015

JSM RECYCLING LTD
Build Green World

www.jsmrecyclingltd.com

Our Local Client

RACE
Race Online Limited

RISING
GROUP
DHAKA

জা
শুধু কারো চৈতন্য
আমাদের মমতা

কালে বেলো
শুধু কারো চৈতন্য
আমাদের মমতা

Padakhep

HELVETAS
BANGLADESH

বাংলাদেশ মেশিন টুলস ফ্যাক্টরী লিমিটেড
BANGLADESH MACHINE TOOLS FACTORY LTD.

Lee
Wrangler

Barta24
সংবাদ, বাতাসির সবচেয়ে সঠিক
বর্তা ২৪
barta24.com

দৈনিক
ইন্ডেফ্যাক
প্রতিষ্ঠাতা অফিসার মোস্তফা মাহমুদ হোসেন

CNS

banglalink™

Link3
THE Service Company

Bangla

CAT

MR.D.I.Y.
Always Low Prices



ISO Certified : 14001:2015, 45001:2018, 9001:2015

JSM RECYCLING LTD
Build Green World

www.jsmrecyclingltd.com



ASE
ROSATOM



OUR CONTACT



+8801799111995



jsmrecyclingltd@gmail.com



www.jsmrecyclingltd.com



*Kolma south, Dairy Farm-
1341, savar, Dhaka*



ISO Certified : 14001:2015, 45001:2018, 9001:2015

JSM RECYCLING LTD

Build Green World

www.jsmrecyclingltd.com